



**DESIGN & CONSTRUCTION GROUP  
THE GOVERNOR NELSON A. ROCKEFELLER  
EMPIRE STATE PLAZA  
ALBANY, NY 12242**

---

**ADDENDUM NO. 1 TO PROJECT NO. 46082**

**CONSTRUCTION AND ELECTRICAL WORK  
PROVIDE OFFICE RENOVATIONS  
DMV LEASE, HAUPPAUGE  
250 VETERAN'S HIGHWAY  
HAUPPAUGE, NY**

May 10, 2024

**NOTE:** This Addendum forms a part of the Contract Documents. Insert it in the Project Manual. Acknowledge receipt of this Addendum in the space provided on the Bid Form.

**CONSTRUCTION SPECIFICATIONS**

1. SECTION 081400 WOOD DOORS: Add the accompanying Section (page 081400 – 1 thru 081400 – 3) to the Project Manual.

**ELECTRICAL SPECIFICATIONS**

2. Page 262416 – 2, Paragraph 2.01, Add Paragraph C to Read:  
“C. Electrical Breakers As produced to be compatible with existing panels
  1. Panel 1 225A MCB 120/208V 3PH, 4W manufactured by Westing house
  2. Panel 2 100A MCB 120/208V 3PH, 4W manufactured by Westing house Type PRL-1 YS2030”

**CONSTRUCTION DRAWINGS**

3. Revised Drawings:
  - a. Drawing No. A-104, noted “ADDENDUM 01 – 05/09/2024” accompany this addendum and supersede the same numbered previously issued drawing.

**ELECTRICAL DRAWINGS**

4. Drawing No. E-101:
  - a. KEY NOTES Column, Change Key Note 5. to Read:.
    - “5. PROVIDE NEW FLUSH FLOOR MOUNTED DUPLEX RECEPTACLE AND NEW FLUSH FLOOR MOUNTED DATA OUTLET AT THE REMOVED RECEPTACLE LOCATIONS. COORDINATE WITH DIRECTOR'S REPRESENTATIVE FOR MOUNTING AND CONNECTION

REQUIREMENTS PRIOR TO INSTALLATION. PROVIDE NEW STUB-UPS, BACK BOXES, DATA OUTLETS, AND CONDUITS (DATA CABLES + PULL STRING) FOR LOW VOLTAGE ITEMS. INSPECT CONDUIT AND NOTIFY DIRECTOR'S REP OF DEFICIENCIES.”

**END OF ADDENDUM**

Brady M. Sherlock, P.E.  
Director, Division of Design  
Design & Construction

## SECTION 081400

### WOOD DOORS

#### PART 1 GENERAL

##### 1.01 RELATED WORK SPECIFIED ELSEWHERE

- A. Steel Frames: Section 081102.
- B. Finish Hardware: Section 087100.
- C. Painting (Site Finishing Doors): Section 099101.

##### 1.02 REFERENCES

- A. Standards: Unless otherwise specified, comply with the applicable requirements of the "Architectural Woodwork Standards" (First Edition-2009) (AWS).

##### 1.03 SUBMITTALS

- A. Shop Drawings: Show details, elevation, and construction for each door type, location and installation requirements for Finish Hardware (including cutouts and reinforcements), and accessory items.
  - 1. Include a schedule of doors using the same reference numbers for details and openings as those on the Contract Drawings.
- B. Product Data: Catalog sheets, specifications, and installation instructions for each type door specified.
- C. Samples:
  - 1. 12 x 12 inch corner sample of each door type, with panel (if any).
    - a. Factory Finished Doors: Include shop finish on samples.
- D. Quality Control Submittals:
  - 1. Affidavit required under Quality Assurance Article.

##### 1.04 QUALITY ASSURANCE

- A. Certifications: Affidavit by door manufacturer certifying that each door meets the specified requirements and standards.
- B. Fire Rated Doors: Carry metal label, fastened on hinge edge with drive screws, indicating fire class/rating certified by an independent testing agency.

##### 1.05 DELIVERY, STORAGE, AND HANDLING

- A. Factory Finished Doors: Deliver doors in factory applied plastic bags or heavy paper protective cartons. Mark packaging with sufficient identification to insure proper door location.

- B. Comply with manufacturer's storage instructions.

## **1.06 PROJECT CONDITIONS**

- A. Environmental Requirements: Do not store doors within the building or install doors until after completion of cast-in-place concrete, masonry, plastering, gypsum board and tile Work, and until after the building has dried out.

## **PART 2 PRODUCTS**

### **2.01 MATERIALS**

- A. Lumber: Comply with applicable AWS species requirements for door type and grade.
  - 1. Exposed Surfaces: As indicated on the Drawings or specified. Furnish matching exposed surface material on both faces and both edges of each door unless otherwise indicated.
  - 2. Fire Rated Doors: Exposed faces to match non-fire rated doors in same building area.
- B. Wood Veneers: Comply with applicable AWS species requirements for door type and grade.
- C. Glue: Type I waterproof adhesives for bonding faces and crossbands to core, for both exterior and interior door fabrication.

### **2.02 FABRICATION**

- A. Interior Flush Wood Doors (Non-Fire Rated): 2 or 3 ply face panel construction each side over a solid glued wood block (stave) core edge bonded to stiles and rails, complying with AWS SLC-5 or SLC-7; or 2 or 3 ply face panel construction each side over a solid wood particleboard core edge bonded to stiles and rails, complying with AWS PC-5 or PC-7.
  - 1. Exposed Surfaces for Paint Finish: Medium density overlay face over standard thickness hardwood face veneers, or AWS Custom Grade rotary cut birch face veneers. Close grain hardwood for exposed edges and all other solid wood components.
  - 2. Exposed Surfaces for Transparent Finish: AWS Premium Grade, rotary cut, matched, natural birch veneer face panels.
- B. Interior Flush Wood Doors (3/4, 1, and 1-1/2 Hour Fire Rated): 2 or 3 ply face panel construction each side over fire rated solid mineral core, with hinge stile construction having equivalent stile edge split resistance and screw withdrawal resistance of one inch thick wood, and complying with applicable AWS FD for the indicated fire rating.
  - 1. Exposed Surfaces for Paint Finish: Medium density overlay face over standard thickness hardwood face veneers, or AWS Custom Grade rotary

- cut birch face veneers. Close grain hardwood for exposed edges and other solid wood components.
2. Exposed Surfaces for Transparent Finish: AWS Premium Grade, rotary cut, matched, natural birch veneer face panels.

### **2.03 FACTORY PRIMING**

- A. Factory Priming for Doors to Receive Transparent Finish: Prime doors to receive transparent finish with stain, required pretreatments, and first coat of finish as follows:
  1. Stain Color: Selected From manufacturer full list of colors.
  2. Finish: Clear

## **PART 3 EXECUTION**

### **3.01 PREPARATION**

- A. Condition doors to average prevailing humidity in installation area prior to hanging.
- B. Prepare doors to receive scheduled mortise hardware. Coordinate doors with the finish hardware schedule and with the door frame shop drawings for proper location of mortise hardware. Machine doors for hardware.
- C. Touch-up cut surfaces of factory primed doors with primer compatible with primer specified for factory priming.

### **3.02 INSTALLATION**

- A. Install the Work of this Section in accordance with manufacturer's printed installation instructions, except as shown or specified otherwise.
- B. Fit doors to prepared frames for proper fit. Allow 3/32 to 1/8 inch clearance at head and both jambs. Trim doors when necessary by planing. Slightly chamfer edge of lock stiles. Bevel lock stile as follows:
  1. Non-fire Rated Doors: 1/8 inch in 2 inches.
  2. Fire Rated Doors: 1/16 inch in 2 inches.
- C. Fire Rated Doors: Install doors in corresponding fire rated frames in accordance with the requirements of NFPA No. 80.
- D. Factory Finished Doors: Field touch-up and restore finishes damaged during installation.

**END OF SECTION**

CONSULTANT

Ronnette Riley Architect

SETTY

Adelaide ENVIRONMENTAL HEALTH

arkaSPecs

ArksSpecs, Inc.

Project Cost Associates, Inc.

**WARNING:**  
THE ALTERATION OF THIS MATERIAL IN ANY WAY, UNLESS DONE UNDER THE DIRECTION OF A COMPARABLE PROFESSIONAL, I.E. ARCHITECT FOR AN ARCHITECT, ENGINEER FOR AN ENGINEER OR LANDSCAPE ARCHITECT FOR A LANDSCAPE ARCHITECT, IS A VIOLATION OF THE NEW YORK STATE EDUCATION LAW AND/OR REGULATIONS AND IS A CLASS 'A' MISDEMEANOR.

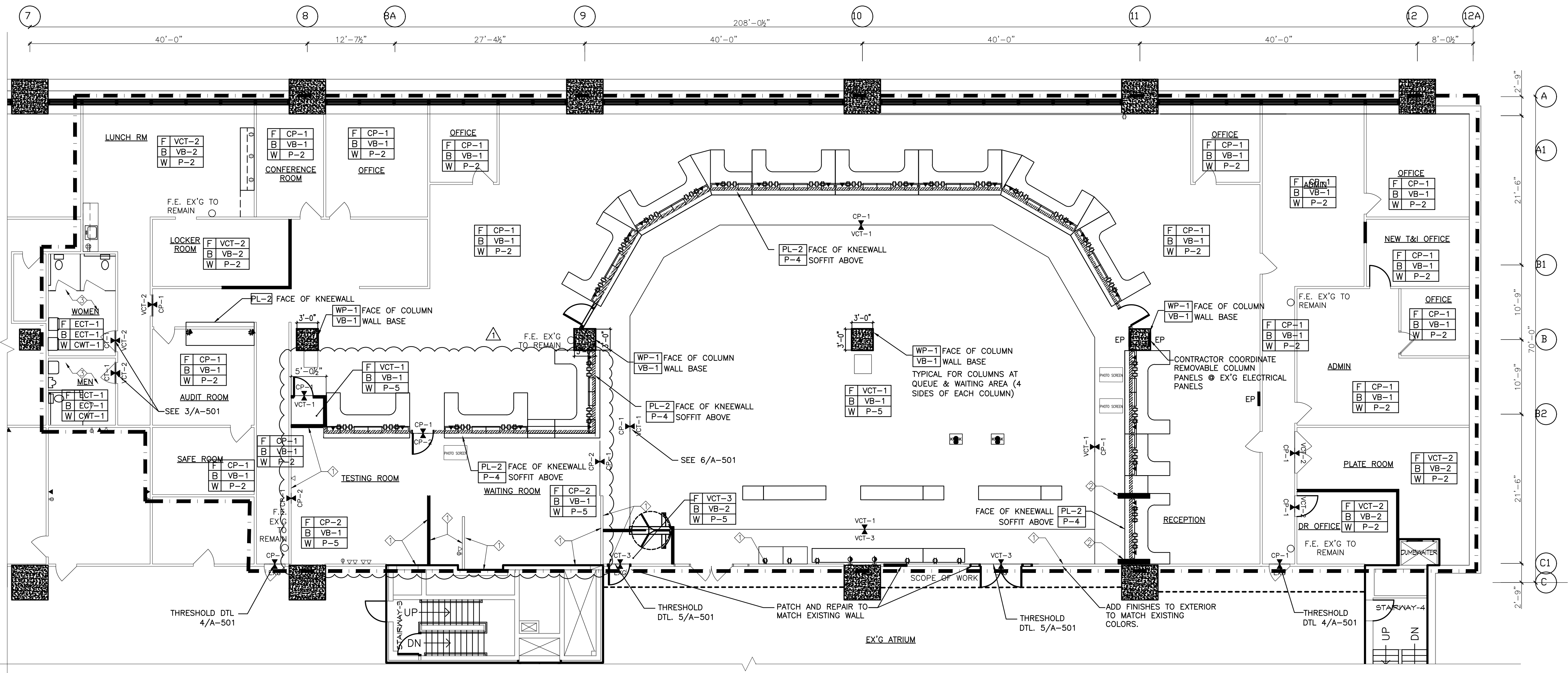


**CONSTRUCTION**

TITLE: PROVIDE OFFICE RENOVATIONS

LOCATION: DMV LEASE, HAUPPAUGE  
250 VETLAN'S HIGHWAY  
HAUPPAUGE, NY

CLIENT: DEPARTMENT OF MOTOR VEHICLES



1 FINISH & POWER PLAN  
1/8"=1'-0"

FINISH LEGEND							
TAG	DESCRIPTION	SIZE (IN.)	FIN	COLOR	SERIES	BASIS OF DESIGN	NOTES
VCT-1	VINYL COMPOSITION TILE	12" x 12"		51941: POLAR WHITE	IMPERIAL TEXTURE	ARMSTRONG	
VCT-2	VINYL COMPOSITION TILE	12" x 12"		51807: SHADOW BLUE	IMPERIAL TEXTURE	ARMSTRONG	
VCT-3	VINYL COMPOSITION TILE	12" x 12"		51910: CLASSIC BLACK	IMPERIAL TEXTURE	ARMSTRONG	
ECT-1	EPOXY COMPOSITION FLOORING	SEAMLESS		STEEL GRAY	STONESHIELD HRI	STONEHARD	WATERPROOF LAYER BELOW, INTEGRATED BASE
CP-1	CARPET FLOOR TILE	24" x 24"		00550	EXPERIENCE MODULAR 10291	PATCRAFT	INSTALLATION: MONOLITHIC
CP-2	CARPET FLOOR TILE	24" x 24"		00550	EXPERIENCE MODULAR 10291	PATCRAFT	INSTALLATION: 1/2 TURN
VB-1	RUBBER BASE	4"		114: LUNAR DUST		ROPPE	VINYL COVE
VB-2	RUBBER BASE	4"		150: DARK GRAY		ROPPE	VINYL COVE
CWT-1	CERAMIC WALL TILE	6" x 6"	SEMI GLOSS	0090- WHITE	BRIGHT FIELD TILE	AMERICAN OLEAN	COVE BASE
CTB-1	CERAMIC WALL BASE	6" x 13" COVE BASE, 1" x 6" CORNERS		CN91	CONCRETE CONNECTIONS	DALTILE	
P-1	PAINT IAL-1		FLAT	2116-70 MIRAGE WHITE		BENJAMIN MOORE	FIELD
P-2	PAINT IAL-2		EGGSHELL	790 BAYBERRY BLUE		BENJAMIN MOORE	ACCENT COLOR, FIELD 2116-70 MIRAGE WHITE
P-3	PAINT IAL-3		SEMI GLOSS	1615 ROCK GRAY		BENJAMIN MOORE	DOORS & FRAMES
P-4	PAINT IAL-2/ ISP		EGGSHELL	2119-20 BLACK BERRY		BENJAMIN MOORE	SOFFIT ABOVE WORKSTATION/ ISP
P-5	PAINT IAL-2/ ISP		EGGSHELL	2132-80 METALLIC SILVER		BENJAMIN MOORE	FIELD
WP-1	HIGH IMPACT WALL PANEL			499-BLU CALIFORNIA	FLAMESAFE	MARLITE	HPL PANELS W/ ABET LAMINATI, FRAMED W/ BRUSHED ALUM CORNER GUARDS
PL-1	PLASTIC LAMINATE		NATURELLE FINISH	MILLENNIUM OAK	5887-NT	FORMICA	
PL-2	PLASTIC LAMINATE		MICRODOT (FRONT BASE OF KNEEWALL)	FOG	961-MC FOG	FORMICA	FRONT BASE OF KNEE WALL

NOTES:  
PROVIDE 10 COLORWAYS FOR EACH PAINT TYPE - COLORS TO BE SELECTED BY THE DIRECTOR  
PROVIDE CEMENT BACKERBOARD AS SUBSTRATE FOR ALL AREAS TO RECEIVE WALL TILE (CWT-1)

POWER LEGEND:

- ⊗ X WALL MTD DUPLEX RECEPTACLE
- ⊗ X WALL MTD DEDICATED CIRCUIT RECEPTACLE
- ⊗ X WALL MTD QUAD RECEPTACLE
- ⊗ X IN FLOOR RECEPTACLE
- ⊗ X GFI DUPLEX W/ GROUND FAULT INTERRUPTER
- ⊗ X GFI DEDICATED OUTLET W/ GROUND FAULT INTERRUPTER
- ⊗ X WALL MTD TELE RECEPTACLE (#=QTY)
- ⊗ X DATA LINK (#=QTY)

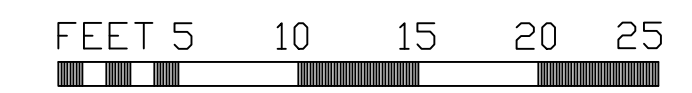
KEYNOTES:

- ◇ PL-2 WAINSCOTTING ON WALLS UP TO 48", (P-5) ABOVE.
- ◇ (P-2) ON INSIDE WALL AND UNDERSIDE OF NEW SURROUND.
- ◇ CWT-1 UP TO 4'-0", PTD TYPE X WATER RESISTANT GYPBOARD ABOVE.

F FLOOR  
B BASE  
W WALLS  
SEE FINISH LEGEND

EP ELECTRICAL PANEL

NOTES: REFER TO ELECTRICAL DRAWINGS FOR COMPLETE ELECTRICAL SCOPE & DRAWINGS



MARK	DATE	DESCRIPTION
△	5/9/2024	ADDENDUM
	12/08/2023	BID DOCUMENTS

PROJECT NUMBER:	46082-C
DESIGNED BY:	ANDRES L.
DRAWN BY:	Rachel S. GS Kim
FIELD CHECK:	
APPROVED:	
SHEET TITLE:	FINISH & POWER PLAN
DRAWING NUMBER:	A-104
SHEET	7 OF 20